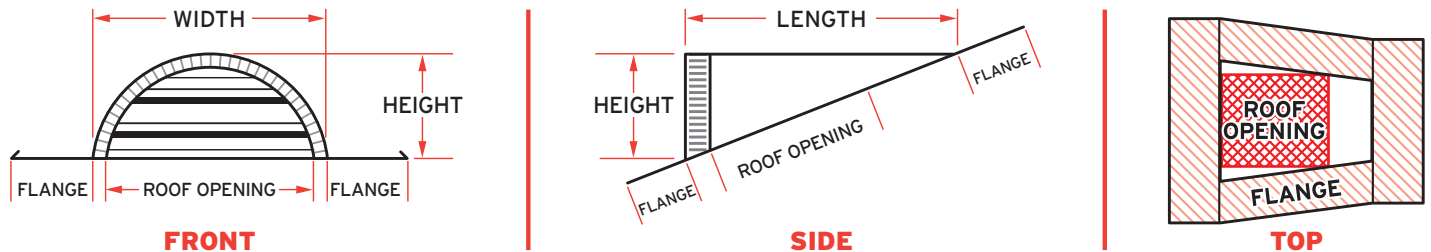




## CMI PRODUCT DATA

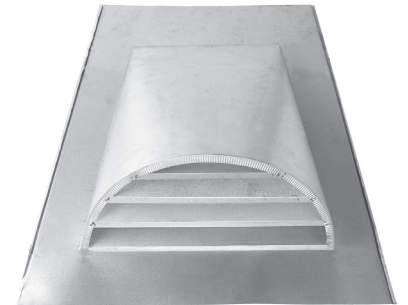
# HALF-ROUND DORMER VENTS

Roof ventilation product designed for use with a variety of roofing materials. All-pitch design allows air movement and combustion release in conjunction with a balanced attic cavity ventilating system. Intended for use on roofs with slope from 3:12 to 6:12.

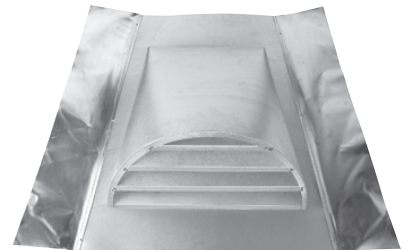


## DORMER VENTS

CMI#	Description	Height	Width	Rough Opening	N.F.V.
STDG1412	14 x 12 Galvanized Rectangular	14 in.	12 in.	14 in. x 14 in.	63 sq. in.
STDH18GB	9 x 18 Galvanized	9 in.	18 in.	12 in. x 9 in.	75 sq. in.
STDS18-3B	9 x 18 Soft Aluminum	9 in.	18 in.	12 in. x 9 in.	75 sq. in.
BH24	12 x 24 Square Tail	12 in.	24 in.	12 in. x 9 in.	100 sq. in.
BH24C	12 x 24 Square Tail, Copper	12 in.	24 in.	12 in. x 9 in.	100 sq. in.
BH24-LTK	12 x 24 Long Tail, 26 Ga.	12 in.	24 in.	12 in. x 9 in.	100 sq. in.
STDH24GB	12 x 24 Galvanized	12 in.	24 in.	12 in. x 9 in.	100 sq. in.
STDH24G-26NH	12 x 24 No Hem, 24 Ga.	12 in.	24 in.	12 in. x 9 in.	100 sq. in.
STDH24G-26NHLT	12 x 24 No Hem, Long Tail, 26 Ga.	12 in.	24 in.	12 in. x 9 in.	100 sq. in.
STDS24-1TILE	12 x 24 Alum. 1 side, Tile Kick 2 sides	12 in.	24 in.	12 in. x 9 in.	100 sq. in.
STDS24-2B	12 x 24 Alum. Flange 2 sides	12 in.	24 in.	12 in. x 9 in.	100 sq. in.
STDS24-3B	12 x 24 Alum. Flange 3 sides	12 in.	24 in.	12 in. x 9 in.	100 sq. in.



BH24



STDS24-2B

## SUB BASES

CMI#	Description	Length	Width	Rough Opening	N.F.V.
STD18SJ	18 inch Sub-Base	16.5 in.	16.5 in.	10.5 in. x 10.5 in.	110 sq. in.
STD24SJ	24 inch Sub-Base	22 in.	22 in.	14 in. x 14 in.	196 sq. in.

### STANDARD MATERIALS

ASTM A653/A653M - G90 hot dipped galvanized steel, 28GA and 26GA.  
 ASTM B370 - Sheet copper, 16 oz and 20 oz.  
 ASTM D9092 - mill phosphatized coating for painting.  
 .025 x .025 hot dipped galvanized 23GA wire bird screen.  
 .017 in. x 0.25 in. x 0.50 in. bird screen, copper or galvanized steel.

### CODE

Conforms to Federal Spec. QQ-5775A, Type 1, Class 4 ASTM A-527.  
 Meets FHA codes.

### INSTALLATION GUIDELINES

Before installation, ensure that the substrate is uniform and even. Do not install venting products on uneven substrate. Installation shall be made in accordance with recognized sheet metal practices. SMACNA Architectural Sheet Metal Manual 6th Edition specifications shall be used as a guide and basis for detail whenever applicable. Construction Metals Inc. ventilation products can be nailed or riveted using conventional hand or power tools. Flashings shall be properly fastened to the substrate by means of wood or metal screws. When fastening dissimilar metals the use of stainless steel is recommended. Use of neoprene washers or similar gasketing material is acceptable.

**NOTE:** Recommended use of this product is for exhaust of warm dry or slightly moist air only. This product is not intended for venting or exhaust grease or liquid.